

Deccan International provides decision-support solutions for both strategic and real-time deployment planning, focusing on improved efficiency and responsiveness in fire and EMS operations. Deccan's product suite includes

Strategic/Planning tools - CAD Analyst and ADAM for optimal station siting and annexation analysis.

Real-time/Operational tools - LiveMUM for move-up recommendations, BARB for run-card building, and DiVa for real-time cross checking of AVL recommendations.



DiVA

Dispatch Validator

Contact us at:

5935 cornerstone court west
suite 230
san diego, ca 92121

www.deccanintl.com

888.deccan.9
858.764.8400



DECCAN INTERNATIONAL
Save Money, Save Lives

Saving you
time with
instant and
verified
dispatch
validation



DECCAN INTERNATIONAL
Save Money, Save Lives

Dispatch Validator

Your electronic reference and validating tool

Communication Centers!

- ▶ Are you switching from traditional run-card based CAD to AVL subsystems?
- ▶ Are your dispatchers still hedging their bets: using traditional methods to verify AVL-CAD recommendations

Deccan International's DiVa, a Dispatch Validator, is a must-have tool for Communication Centers transitioning from traditional run-card based CAD to AVL subsystems. DiVa's easy map-based, run-card lookup and fast processing speeds makes it an ideal tool for instant cross-verification of dispatch recommendations.

Built on robust run-card based models, DiVa is capable of evaluating both static run orders (from run-card based CAD) and AVL closest resources to provide dispatchers with a much required decision-support and verification tool for their day-to-day operations.

Fast and easy to use, DiVa eliminates the need of the dispatchers to refer to unwieldy run-card books to cross-check AVL recommendations. This traditional method is to cumbersome to be effective, especially with high incident ratios or widespread disaster. With DiVa, Communication Centers have a "lean-and-mean" tool that is fast and has an easy-to-use interface for use directly on dispatcher workstations.



DiVa as an electronic reference book

One of DiVa's intrinsic capabilities is its fast processing speed. This allows dispatchers to readily lookup and retrieve essential dispatch run orders, just as it were stored in the CAD. By speeding the lookup process and providing for an indexed reference, DiVa poses as a vital, time-saving electronic reference book for Communication Centers' everyday use.

DiVa and its applications

Area-wide resource pick lists for disaster response (not capable with CAD)

Use DiVa as an in-vehicle reference tool during large scale disasters. DiVa, with its essential capabilities to include area-wide mutual aid units, specialty vehicles etc, builds comprehensive pick lists to provide the Operational Chief with critical supplementary information that a CAD does not provide.

Integral part of a back-up solution (in the event of CAD subsystem failure)

DiVa, built on robust run-card information, can stand-in as proxy for CAD in the event of a CAD system failure. When AVL systems go down, DiVa, which can run on laptops, can be used as back-up to quickly lookup run-card orders for timely dispatch.

Other applications of DiVa include

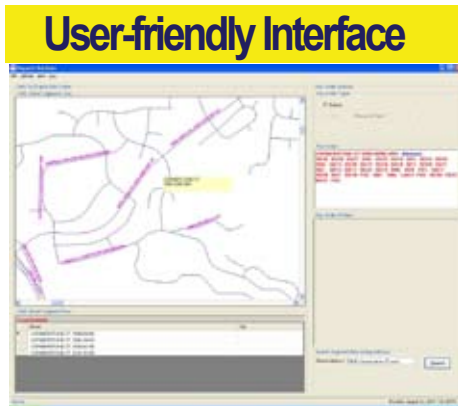
Fire Prevention - To answer questions posed by insurance companies regarding first dues, closet stations etc.

Communications Support Resource - as a stand alone, in-field operational tool in mobile communication centers.

Diva for Dispatchers

DiVa is built exclusively with dispatcher's operational requirements in mind. Speedy processing, easy-to-use interfaces together with a robust back-end address verification system, makes this tool an indispensable validating tool for dispatcher's operations.

- ▶ Fast processing speed – can run on dispatcher workstation.
- ▶ Easy map-based lookup – for quick cross verification of CAD recommendations.
 - ▶ Permits “loose” entry of addresses.
 - ▶ Provides pick lists of actual street addresses that are close to the entered address.
 - ▶ Quickly zooms into the verified address/area and displays the run-card order.
 - ▶ Displays run-cards for every station chosen by the user.
 - ▶ Provides run-card information either in the form of station order or unit orders by resources type.



- ▶ Simple user interface – for easy navigation.
 - ▶ One-click zoom to the address provided.
 - ▶ Cross street names and other major arterials providing the user with good reference for the target location.
- ▶ Robust address verification capabilities.
- ▶ Allowance for unforced dispatcher errors
 - ▶ Misspelling of street names
 - ▶ Aliases for street names
 - ▶ Abbreviations and short forms for street names
- ▶ Road network validation, accounting for one-ways streets, dead ends, and road or bridge closures.

DiVa and BARB

While BARB generates robust run-cards, its data-intensive processing does not render it suitable to run on dispatchers' workstations. DiVa, on the other hand, is designed as a convenient add-on to BARB. Designed as a run-card viewer, DiVa enables easy and fast lookup suitable for everyday dispatch operations. Contact a Deccan representative at sales@deccanintl.com to learn how DiVa can be applied as a reference tool to validate dispatch recommendations.

